

SIX (6), SEVEN (7) AND NINE (9) FOOT DIAMETER HOPPER BOTTOM BINS

THE HEART OF YOUR FEEDING SYSTEM - ENGINEERED TO STAY FIT FOR YEARS OF ECONOMICAL, RELIABLE USE



LADDERS
Sturdy 11 gauge
galvanized steel
Roof ladder on 9 foot bin



BIN LEGS
Galvanized, 12 gauge
formed leg for superior
fit and durability

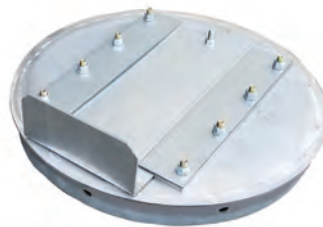


OPENER
Spring lid slides
away from truck auger
Weather proof lock

TWO DISCHARGE OPTIONS



F60G85 Poly
Transition & Slide
Shutoff.
Will accept boot for
rigid or flex auger.



SLGT10 MANUAL SLIDE



Plenty of space for a
firm footing



LEG ANCHOR
8 gauge and 10 gauge
steel construction
Provides great stability
Easy to install

HAWKEYE STEEL PRODUCTS, INC.

FLOWMATIC HOPPER BINS....PREMIUM ZINC PROTECTED STEEL

SIX (6) FOOT (1.83m) DIAMETER BINS WITH 30 DEGREE ROOF, 60 DEGREE CENTER DRAW HOPPER TO 16" (40.6cm) OPENING. ALL 2.66" (6.76CM) CORRUGATION.

MODEL NUMBER	DESCRIPTION	2000 LB TONS	METRIC TONS	CUBIC FT (METERS)	BUSHELS	DISCHARGE HEIGHT	FILL HEIGHT	SHIPPING WT. LBS (Kg)
BB601	6 ft. (1.83m) Dia./One 32" (81.3cm) Ring, 2.66" (6.76cm) Corrugation	2.9	2.6	145.1 (4.1)	116	26 1/2" (67.3cm)	10' - 2 3/4" (3.12m)	464 (210.9)
BBL601	Ladder Kit for BB601							29 (13.2)
BB602	6 ft. (1.83m) Dia./Two 32" (81.3cm) Rings, 2.66" (6.76cm) Corrugation	4.4	4.0	220.1 (6.2)	176	26 1/2" (67.3cm)	12' - 10 3/4" (3.93m)	601 (273.2)
BBL602	Ladder Kit for BB602							35 (15.9)
BB603	6 ft. (1.83m) Dia./Three 32" (81.3cm) Rings, 2.66" (6.76cm) Corrugation	5.9	5.4	295.1 (8.4)	236	26 1/2" (67.3cm)	15' - 6 3/4" (4.74m)	738 (335.5)
BBL603	Ladder Kit for BB603							43 (19.5)
986-2508K	32" (81.3m) Mid-Top Ring for 6 Foot Bin							

SEVEN (7) FOOT (2.13M) DIAMETER BINS WITH 30 DEGREE ROOF, 67 DEGREE CENTER DRAW HOPPER TO 16" (40.6CM) OPENING. ALL 2.66" (6.76CM) CORRUGATION

MODEL NUMBER	DESCRIPTION	2000 LB TONS	METRIC TONS	CUBIC FT (METERS)	BUSHELS	DISCHARGE HEIGHT	FILL HEIGHT	SHIPPING WT. LBS (Kg)
BB701	7 ft. (2.13m) Dia./One 32" (81.3cm) Ring	4.6	4.2	229.8 (6.5)	184	26 1/2" (67.3cm)	13' - 10 1/2" (4.23m)	694 (315.5)
BBL701	Ladder Kit for BB701							43 (19.5)
BB702	7 ft. (2.13m) Dia./Two 32" (81.3cm) Rings	6.7	6.1	332.3 (9.4)	266	26 1/2" (67.3cm)	16' - 6 1/2" (5.04m)	829 (376.8)
BBL702	Ladder Kit for BB702							51 (23.2)
BB703	7 ft. (2.13m) Dia./Three 32" (81.3cm) Rings	8.7	7.9	434.8 (12.3)	348	26 1/2" (67.3cm)	19' - 2 1/2" (5.85m)	964 (438.2)
BBL703	Ladder Kit for BB703							59 (26.8)
BB704	7 ft. (2.13m) Dia./Four 32" (81.3cm) Rings	10.8	9.8	537.3 (15.2)	430	26 1/2" (67.3cm)	21' - 10 1/2" (6.67m)	1099 (499.5)
BBL704	Ladder Kit for BB704							70 (31.8)
980-2709	32" (81.3m) Mid-Top Ring for 7 Foot Bin							

NINE (9) FOOT (2.74M) DIAMETER BINS WITH 30 DEGREE ROOF, 60 DEGREE CENTER DRAW HOPPER TO 16" (40.6CM) OPENING. ALL 2.66" (6.76CM) CORRUGATION

MODEL NUMBER	DESCRIPTION	2000 LB TONS	METRIC TONS	CUBIC FT (METERS)	BUSHELS	DISCHARGE HEIGHT	FILL HEIGHT	SHIPPING WT. LBS (Kg)
BB901	9 ft. (2.74m) Dia./One 32" (81.3cm) Ring	7.8	7.1	390.2 (11.1)	312	27" (68.6cm)	14' - 6 3/4" (4.44m)	1024 (465.5)
BBL901	Ladder Kit for BB901							56 (25.5)
BB902	9 ft. (2.74m) Dia./Two 32" (81.3cm) Rings	11.3	10.3	565.4 (16.0)	452	27" (68.6cm)	17' - 2 1/4" (5.24m)	1218 (553.6)
BBL902	Ladder Kit for BB902							64 (29.1)
BB903	9 ft. (2.74m) Dia./Three 32" (81.3cm) Rings	14.7	13.3	735.1 (20.8)	588	27" (68.6cm)	19' - 10 1/4" (6.05m)	1412 (641.8)
BBL903	Ladder Kit for BB903							72 (32.7)
BB904	9 ft. (2.74m) Dia./Four 32" (81.3cm) Rings	18.1	16.4	905.6 (25.6)	725	27" (68.6cm)	22' - 6 3/4" (6.88m)	1605 (729.5)
BBL904	Ladder Kit for BB904							80 (36.4)
BB905	9 ft. (2.74m) Dia./Five 32" (81.3cm) Rings	21.4	19.4	1070.3 (30.3)	856	27" (68.6cm)	25' - 2 1/4" (7.68m)	1782 (810.0)
BBL905	Ladder Kit for BB905							88 (40.0)
980-2604K	32" (81.3m) Mid-Top Ring for 9 Foot Bin							



Capacities are calculated using 40 pounds per cubic foot; 50 pounds per bushel

NOTICE

Our hopper bottom bins are designed for the storage of free flowing materials having a density of no more than 40 pounds per cubic foot. Soybean meal, meat scraps and certain other materials are NOT considered to be free flowing and should NOT be stored in our bins.



HAWKEYE STEEL PRODUCTS, INC.

P.O. Box 2000, Houghton, Iowa 52631 USA • Web: www.hawkeyesteel.com
Phone: 319/469-4141 • Fax: 319/469-4402 • E-mail: sales@hawkeyesteel.com

DISTRIBUTED BY: